

Working with counterparts and communities

Pia Harkness

CDU PhD Candidate: Coastal livelihoods and Marine conservation

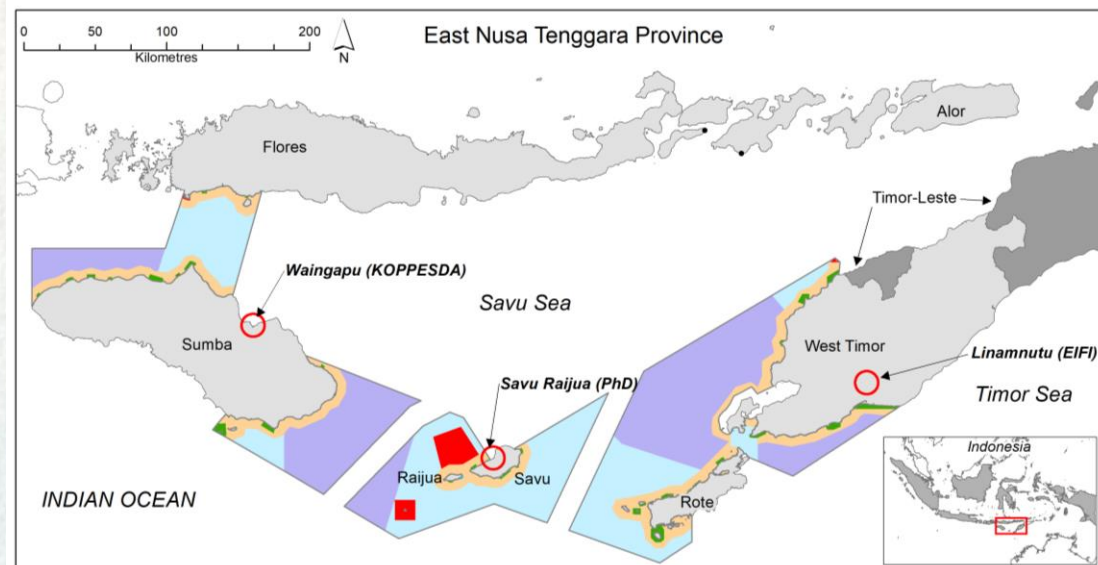
Eastern Indonesian Field Intensive (EIFI) - West Timor



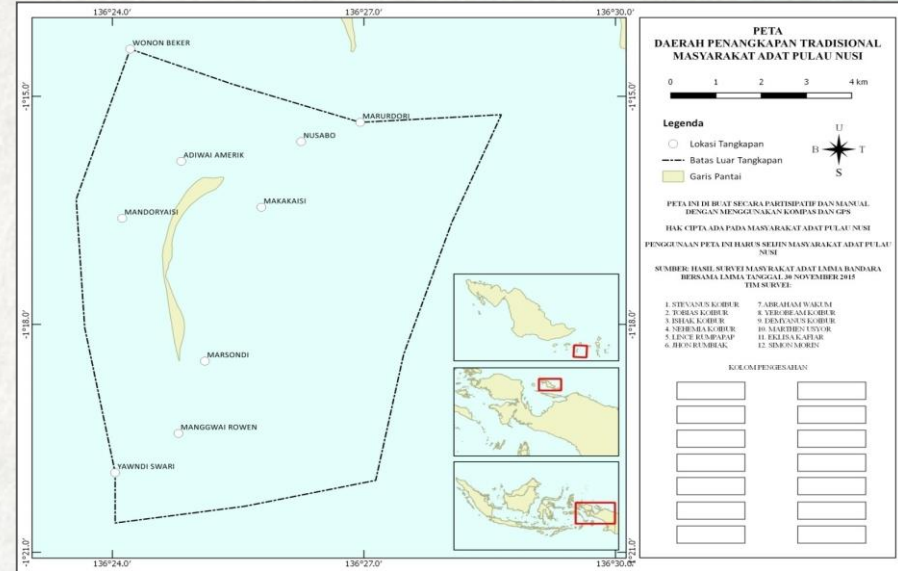
KOPPESDA (NGO) - Sumba



PhD: Coastal Livelihoods and marine conservation - Savu Raijua



Locally Managed Marine Area Network - Biak, West Papua



Take home messages

- International work is rewarding for both sides
- Good relationships very important and opportunities often stem from them
- Important to make sure that programs align with the interests of the communities or counterparts that we're working with, to make sure that projects are beneficial.

